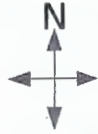




Minco V West Wind  
 54 – GE 2.5 MW  
 10 – GE 1.79 MW  
 56 – GE 1.715 MW  
 Caddo County, OK, USA



As of: May 30, 2018

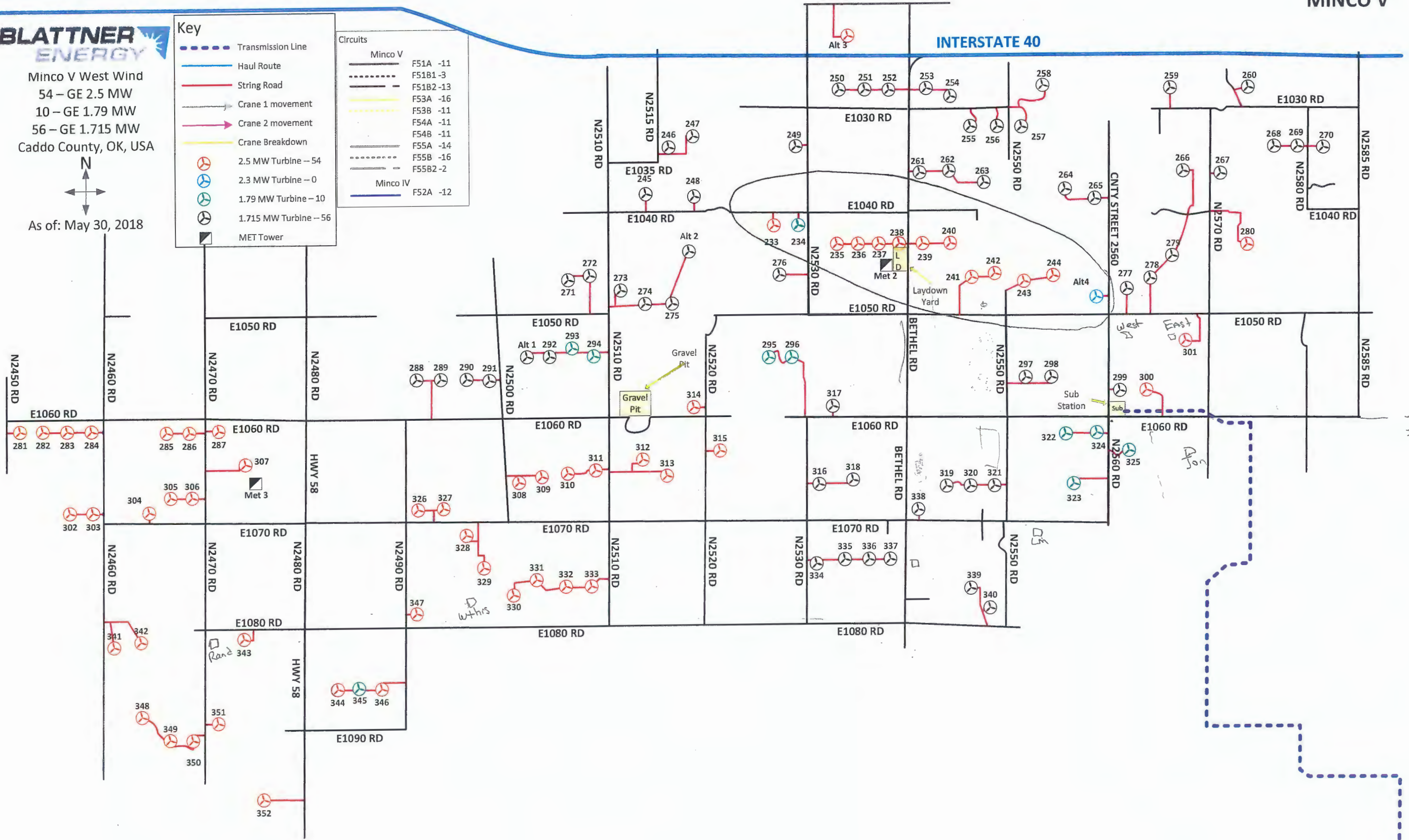
Key

- Transmission Line
- Haul Route
- String Road
- Crane 1 movement
- Crane 2 movement
- Crane Breakdown
- 2.5 MW Turbine – 54
- 2.3 MW Turbine – 0
- 1.79 MW Turbine – 10
- 1.715 MW Turbine – 56
- MET Tower

Circuits

- Minco V
- F51A -11
  - F51B1-3
  - F51B2-13
  - F53A -16
  - F53B -11
  - F54A -11
  - F54B -11
  - F55A -14
  - F55B -16
  - F55B2-2
- Minco IV
- F52A -12

MINCO V

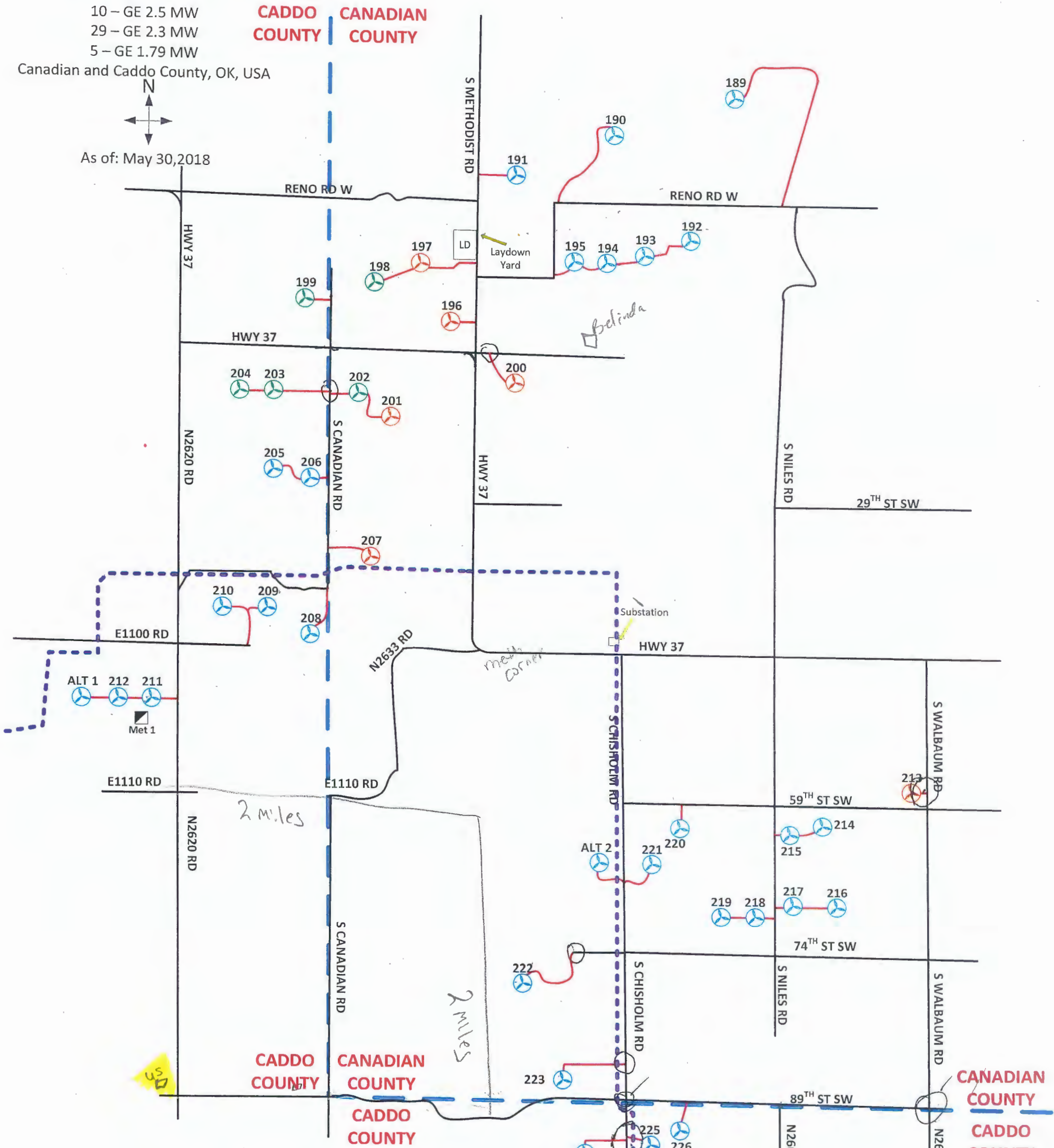




10 – GE 2.5 MW  
 29 – GE 2.3 MW  
 5 – GE 1.79 MW  
 Canadian and Caddo County, OK, USA



As of: May 30, 2018



North West of Shown Map Area  
 (See Minco V Map)

**Legend:**

- 2.5 MW Turbine – 10
- 2.3 MW Turbine – 29
- 1.79 MW Turbine – 5
- MET Tower
- F41A – 10 WTG
- F41B – 9 WTG
- F42A – 13 WTG
- F42B – 12 WTG
- F52A – 13 WTG
- Transmission Line

